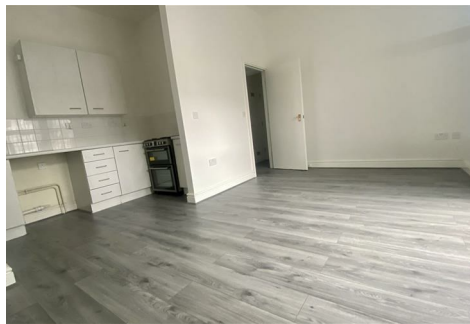


MATTHEW JAMES
Property Services



10a Middleborough Road, Coventry, CV1 4DE
£800 Per Calendar Month

AVAILABLE NOW..... NEWLY CONVERTED..... MODERN..... Here we have a one bedroom flat as part of a house conversion located very close to the City Centre in Coundon, Coventry. Comprising of lounge, open plan kitchen with cooker, bathroom with bath and over head electric shower and double bedroom. There's a large shared rear garden and a driveway for 3-4 vehicles to the front. Gas Central Heating and Double Glazing and comes UNFURNISHED.

Lounge

Open Plan Kitchen

Bathroom

Bedroom

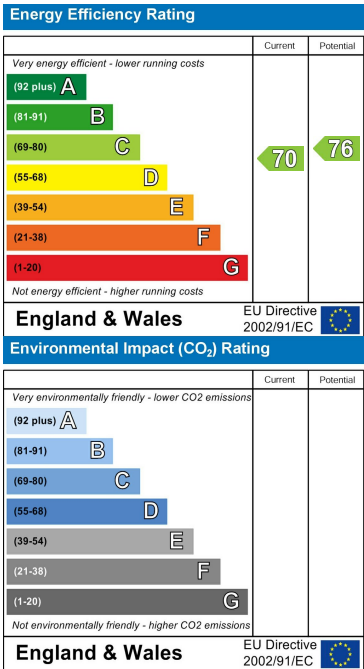
Rear Garden

Floor Plan

Area Map



Energy Efficiency Graph



These particulars, whilst believed to be accurate are set out as a general outline only for guidance and do not constitute any part of an offer or contract. Intending purchasers should not rely on them as statements of representation of fact, but must satisfy themselves by inspection or otherwise as to their accuracy. No person in this firms employment has the authority to make or give any representation or warranty in respect of the property.

CONTACT INFORMATION

24a Warwick Row, Coventry CV1 1EY
02477 170170

info@matthewjames.uk.com
www.matthewjames.uk.com

Facebook
Twitter